

TBI-TRH55 - Linear Guides

FEATURES

- Size: 55mm Linear Guide Rail
- Dynamic Load: Up to 170.13 kN
- Static Load: Up to 268.47 kN
- Rail Lengths Up to 4 Meters
- Custom Rail Sizes Available
- Matched Bearing Blocks
- End-Seal Options: Standard or Reinforced
- Pre-Load: Clearance, Standard, or Light



DESCRIPTION

TBI's high-quality linear guides deliver precision, durability, and affordability in one single package! Available in a 55mm size, this sleek, high-quality design incorporates the rail and the block together to provide a convenient, easy-to-use product. Little friction resistance allows for high accuracy and speed, while several preload options are available for increased rigidity and performance. They are offered in standard or custom lengths, and are ideal for dynamic loads up to 170.1 kN and static loads up to 268.5 kN. All standard blocks come with a bottom seal and double lip end seals.

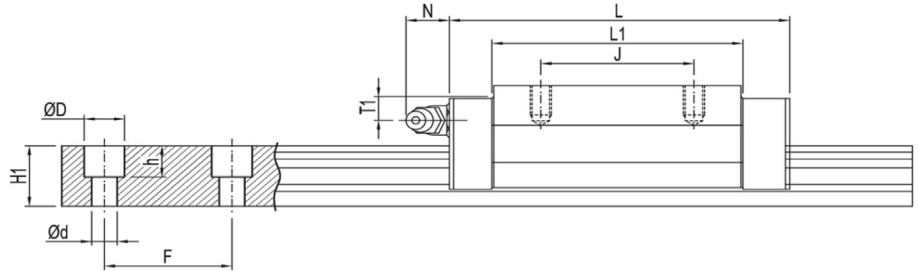
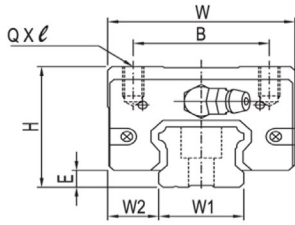
SPECIFICATIONS

Block Part Number	Fabrication Dimensions (mm)			Block Dimensions (mm)								Load Capacities (kN)		Static Moment (Nm)			Weight (lbs)
	H	W ₂	E	W	B	J	L	L1	QxL	T	N	C	C ₀	M _x	M _y	M _z	
TBI-TRH55FE-N-Z0	70	43.5	13	140	116	95	200.1	156.1	M14x17	11	12.5	170.1	268.5	7097.1	6575.7	6575.7	10.4
TBI-TRH55VE-N-Z0	80	23.5	13	100	75	95	200.1	156.1	M12x18	21	12.5	170.1	268.5	7097.1	6575.7	6571.2	10.4
TBI-TRH55VL-N-Z0	80	23.5	13	100	75	75	162	118	M12x18	21	12.5	144.1	211.9	5602.9	4037.6	4037.6	9.7
TBI-TRH55FL-N-Z0	70	43.5	13	140	116	95	162	118	M14x17	29	12.5	144.1	211.9	5602.9	4037.6	4037.6	9.3

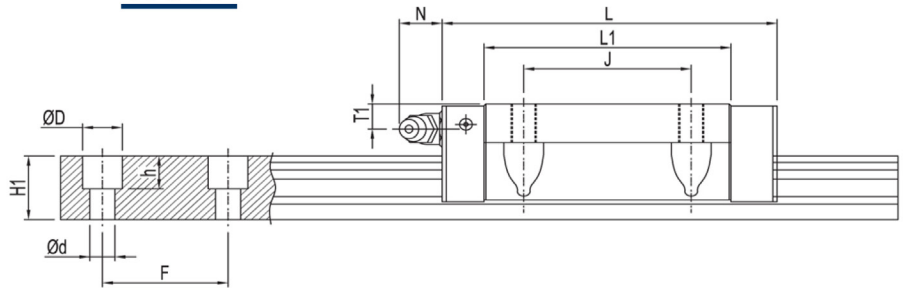
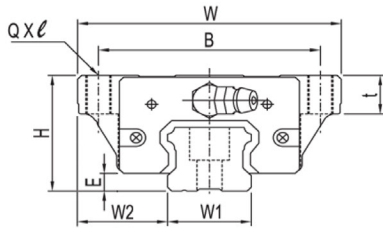
Rail Part Number	Rail Dimensions (mm)							Rail Length (mm)	Weight (lbs)
	W ₁	H ₁	F	D	d	d x D x h			
TBI-TR55N-0300-30-30	53	44	120	23	16	16 x 23 x 20	300	10.7	
TBI-TR55N-0510-15-15	53	44	120	23	16	16 x 23 x 20	510	18.1	
TBI-TR55N-0700-50-50	53	44	120	23	16	16 x 23 x 20	700	24.9	
TBI-TR55N-0900-30-30	53	44	120	23	16	16 x 23 x 20	900	32.0	
TBI-TR55N-1110-15-15	53	44	120	23	16	16 x 23 x 20	1110	39.4	
TBI-TR55N-1300-50-50	53	44	120	23	16	16 x 23 x 20	1300	46.2	
TBI-TR55N-1500-30-30	53	44	120	23	16	16 x 23 x 20	1500	53.3	
TBI-TR55N-1710-15-15	53	44	120	23	16	16 x 23 x 20	1710	60.7	
TBI-TR55N-1900-50-50	53	44	120	23	16	16 x 23 x 20	1900	67.4	
TBI-TR55N-2100-30-30	53	44	120	23	16	16 x 23 x 20	2100	74.5	
TBI-TR55N-2310-15-15	53	44	120	23	16	16 x 23 x 20	2310	82.0	
TBI-TR55N-2500-50-50	53	44	120	23	16	16 x 23 x 20	2500	88.7	
TBI-TR55N-2700-30-30	53	44	120	23	16	16 x 23 x 20	2700	95.8	
TBI-TR55N-2910-15-15	53	44	120	23	16	16 x 23 x 20	2910	103.3	
TBI-TR55N-3100-50-50	53	44	120	23	16	16 x 23 x 20	3100	110.0	
TBI-TR55N-3300-30-30	53	44	120	23	16	16 x 23 x 20	3300	117.1	
TBI-TR55N-3510-15-15	53	44	120	23	16	16 x 23 x 20	3510	124.6	
TBI-TR55N-3700-50-50	53	44	120	23	16	16 x 23 x 20	3700	131.3	
TBI-TR55N-3900-30-30	53	44	120	23	16	16 x 23 x 20	3900	138.4	
TBI-TR55N-4000L	53	44	120	23	16	16 x 23 x 20	4000	142.0	

L011032

TRH-V



TRH-F



Force Diagram

